

# BOB WALLIN INSURANCE

Volume 3, 2013

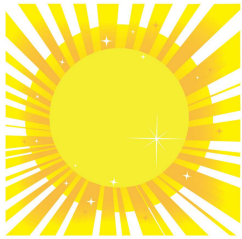
## Table Of Contents

Community Pg. 1

Landslides Pg. 2

Testimonials Pg. 2

Welcome  
sunshine!



You feel so good!

## Upcoming Events:

♥ Mothers Day! ♥  
May 12th

🇺🇸 Memorial Day 🇺🇸  
May 27th  
(Closed Monday)

😊 Father's Day! 😊  
June 16th

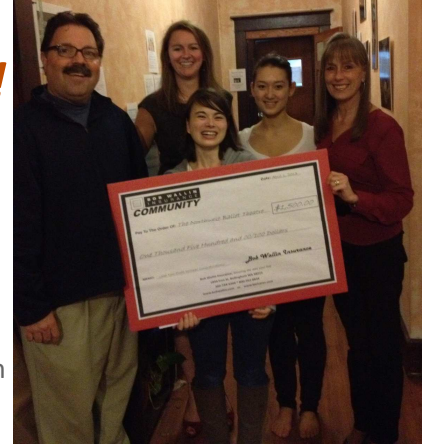
🎆 4th of July! 🎆  
July!  
(closed the 4th)



## Building A Strong Community ....From The Heart!

*As many of you know, we recently wrapped up one of our most successful community outreaches and surprised the non-profit winner with a \$1,500 donation!*

We can hardly describe how honored we are to be part of such an involved community and how joyful we were to present a check for \$1,500 to a local Whatcom County non-profit.



In February we accepted nominations for local non profits to win \$1,500 from Bob Wallin Insurance. We were thrilled to receive over 60 local, non-profit nominations from Whatcom County! The nomination period was from February 1st to February 28th.

Starting March 1st, the public could vote for their favorite to win the prize money. To keep it fair, we limited one vote per IP address. Our phones were ringing off the hook on March 1st and the air was filled with excitement! People were calling to ask for more information, to get help or to just call and say, *"This is such a great thing you are doing!"* We received OVER 5,000 votes in the month of March! We were blown away by how many people participated and joined in so THANK YOU Whatcom County for helping to make this a success!

On Thursday, April 4th, we had the absolute honor and privilege to present the winner, Northwest Ballet, with a check for \$1,500 **BUT**, they didn't know they had won because we pulled the results a week prior.

Thursday afternoon two of the owners here, Von Smith and Ann Wallin-Leonard, along with their marketing team Suzanne Taylor, Jason Taylor & Britney Haroutonian surprised the NW Ballet with a novelty check, balloons, the *real check* and many smiles and hugs!

We are so incredibly grateful to be a part of our great community. We truly believe in you, our community members and look forward to our next mission together!

To view the video, go to our our community site: [www.bwicares.com](http://www.bwicares.com) and click on our "blog" or "latest news"!

Thank you Whatcom County!

Sincerely,

*Von, Ann & Sue (Owners—Bob Wallin Insurance) and the staff*

# Landslides: You're Not Covered!

Floods and landslides have been the topic of discussion lately in the news. Unfortunately, there is little education out there regarding landslides and a homeowner's policies. In fact, there are several perils (losses or potential claims) that are NOT covered under a homeowner's policy. Landslides, earthquakes and floods are just a few of them. Most people understand now that earthquake and flood is not covered under their homeowner's policy and in order to have coverage, they usually must purchase an earthquake policy and/or flood policy. But what you might not realize is that a "Landslide" may not be covered under any of those three policies.

A common misconception is that the landslide is covered under a flood policy or an earthquake policy but depending on the circumstances, it might not be covered under any of the policies because a landslide can occur for several reasons; it could depend on the soil, rainfall, recent construction, grade of the slope and can take weeks or months to build up. We also get comfortable with the mild weather of the Pacific Northwest. We don't always have catastrophic weather seasons so we don't consider the other possibilities until it is too late.

There is a comprehensive policy you can invest in that covers all three, flood, earthquake and landslides. It is called a "DIC Policy" or "Difference in Conditions Policy". Climate changes and unpredictable weather can put you at a greater risk. The best way to find out if you have coverage is to contact your agent and schedule a comprehensive insurance review.

If you would like some more information on this or would like to discuss your coverage with one of our staff members, give us a call or shoot us an email!

[bwicares.com](http://bwicares.com) \* 360-734-5204 \* 800-562-8834 \* [suzanne@bobwallin.com](mailto:suzanne@bobwallin.com) \* [bobwallin.com](http://bobwallin.com)



Photo courtesy of the Washington Department of Natural Resources

## What Are People Saying About Bob Wallin Insurance?

*"Fast quote, same day coverage. They were friendly, had many companies."* John

*"We have been with Bob Wallin Ins. for a couple of years now. Suzanne and the staff have been great to work with. Customer service on our policies is always prompt, friendly and accurate. All of our business has been done via phone and internet, so don't hesitate using them if you live outside of Bellingham."* ~ Nena

*"My wife and I have been using Wallin Insurance for about four years now. We are very satisfied and have used Wallin Insurance as insurance broker for our personal home, cars, investment properties in Bellingham and Reno, Nevada and an umbrella liability policy. Wallin can do it all even in other states. I am also the Treasurer for a small condominium association and we use Wallin for our base insurance policy. I also know that several condo owners switched to Wallin after receiving quotes. It is always nice to have a local insurance provider for all your insurance needs. Call Suzanne Taylor, our Personal Insurance Broker. She is excellent and always there to assist with our insurance needs. Suzanne has used four different insurance companies to ensure we get the best quotes for price and service needs."* - Paul & Chris

# ACROSS

1. Quiet time
5. Accumulate
10. Wise one
14. Dogfish
15. Slander
16. Keen
17. Assortment
19. Piecrust ingredient
20. Friend
21. Estimate
22. Dawdle
23. Spits
25. Colonic
27. East southeast
28. A type of metal (American sp.)
31. Clever
34. Mountain crest
35. Consumer Price Index
36. Wan
37. Glossiness
38. Fired a weapon
39. Be unwell
40. Pass over
41. Smell
42. Very narrow
44. Ribonucleic acid
45. Coming and \_\_\_\_\_
46. Noblewoman
50. Postage
52. Debonair
54. Health resort
55. Despise
56. Demoralized
58. Computer symbol
59. Something to shoot for
60. Chime
61. Harbor
62. European blackbird
63. Paris airport



# DOWN

1. Lights
2. Inuit boat
3. Fine thread
4. Varnish ingredient
5. Attraction
6. Units of distance
7. Garments of goat hair
8. Serving no useful purpose
9. Cunning
10. Highly seasoned fatty sausage
11. Snow slide
12. Lass
13. Countercurrent
18. Excrete
22. A Greek territorial unit
24. Used to be
26. Cashews and almonds
28. Got up
29. Atop
30. Glove
31. Resorts
32. Letters, etc.
33. Crocodile cousin
34. Next to
37. Smile
38. Stigma
40. Paper holder
41. Contemptuous look
43. Instant
44. Vituperate
46. Pontifical
47. Fruity-smelling compound
48. Hex
49. In an unfortunate way
50. Transport commercially
51. Meal in a shell
53. End \_\_\_\_
56. Not brilliant
57. Nigerian tribesman

**Find The Answer  
On Our Facebook Page!**

**Like our Facebook page on or after Friday, May 10th for answers!**

**How did you do?  
Did you get them all right?**

**~Thanks for playing!~**

For information on our  
community events or to  
learn more about us,  
Follow us on Facebook  
Or go to our community  
page:

**www.bwicares.com**

**Bob Wallin Insurance,**  
*"Securing the way you  
live."*



Bob Wallin Insurance  
1844 Iron Street  
Bellingham WA 98229  
www.bobwallin.com



Bob Wallin Insurance was built on the foundation of family Values. We are a family operated *local* business and we are committed to our customers and community. Together, we can make a difference!

**Bob Wallin Insurance, “Securing the way you live.”**

*If you have questions or are interested in knowing more about us, give us a call or stop in. We’d love to hear from you!*

*Address: 1844 Iron Street, Bellingham, WA 98225*

*PH: 360-734-5204, toll free 800-562-8834*

*www.bobwallin.com*

*\**

*www.bwicares.com*